

Great Valley School District
Education Foundation

Greetings from the
Venture Grant Team

WE WANT TO FUND YOUR CREATIVITY IN THE CLASSROOM

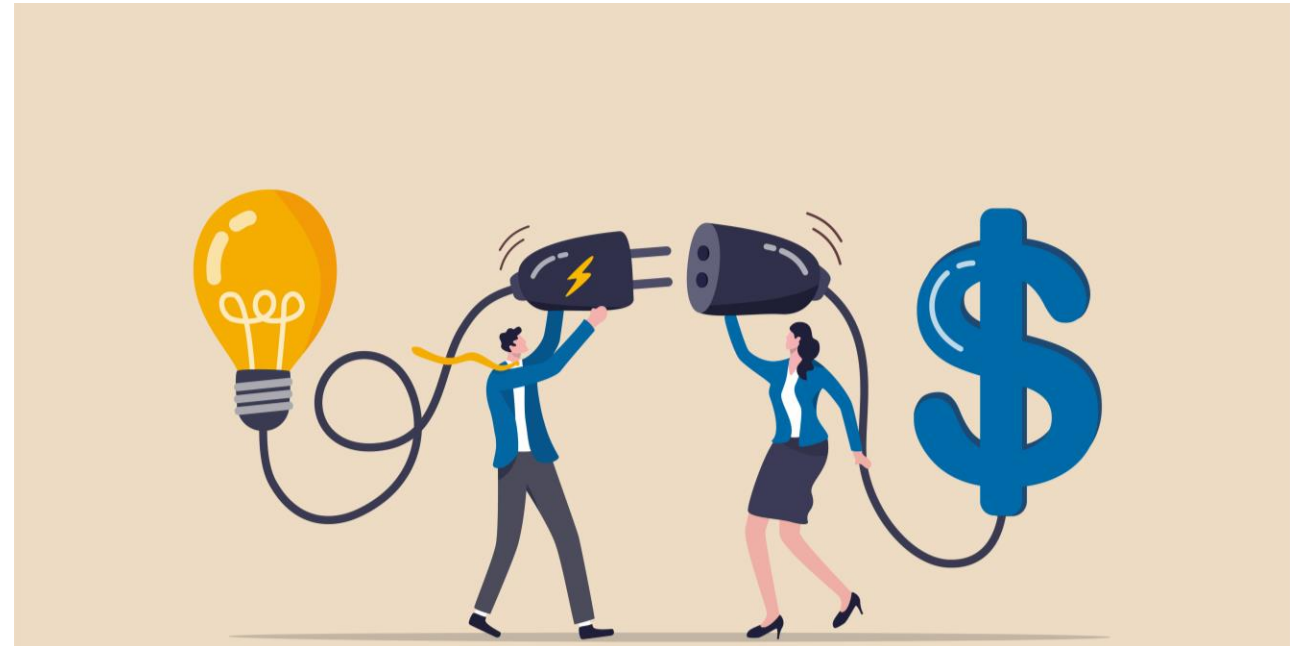


CONTINUALLY IMPROVED VENTURE GRANT PROGRAM



Everyone is welcome to apply

- ✓ Quick & Easy new format
- ✓ \$ 20,000 available
- ✓ Two cycles per year
 - ✓ First Cycle - due by Oct. 27, 2023
 - ✓ Second Cycle - due by Feb. 2, 2024
- ✓ Quick approval



1



Dream up an exciting idea

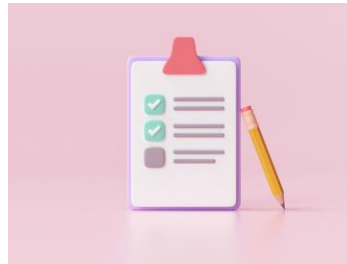
2



Talk with your principal/supervisor



3



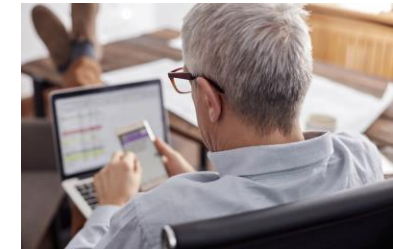
Review Venture Grant Guidelines & Download Venture Grant Document

4

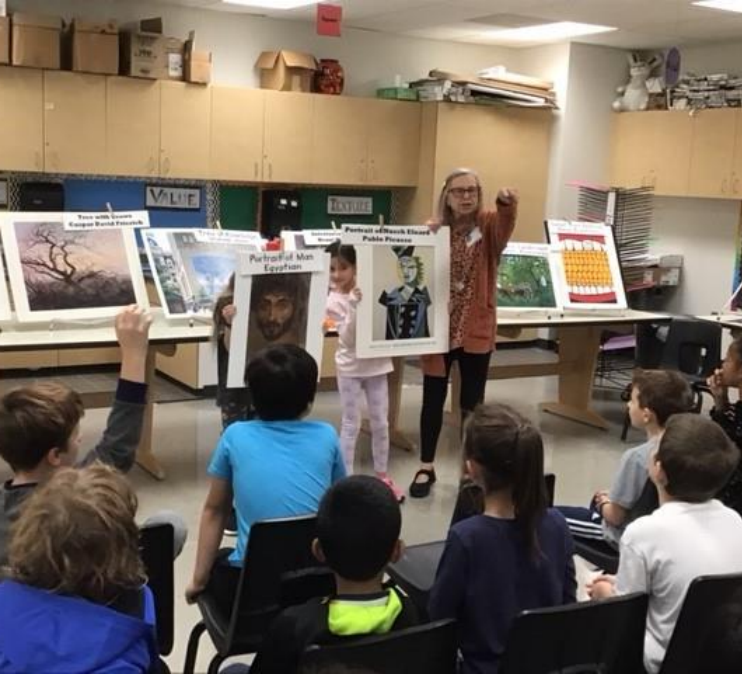


Complete a short Letter of Intent

5



Send your idea on its way



Art Goes to School



Child Study Team



Equitable Access to Library Books



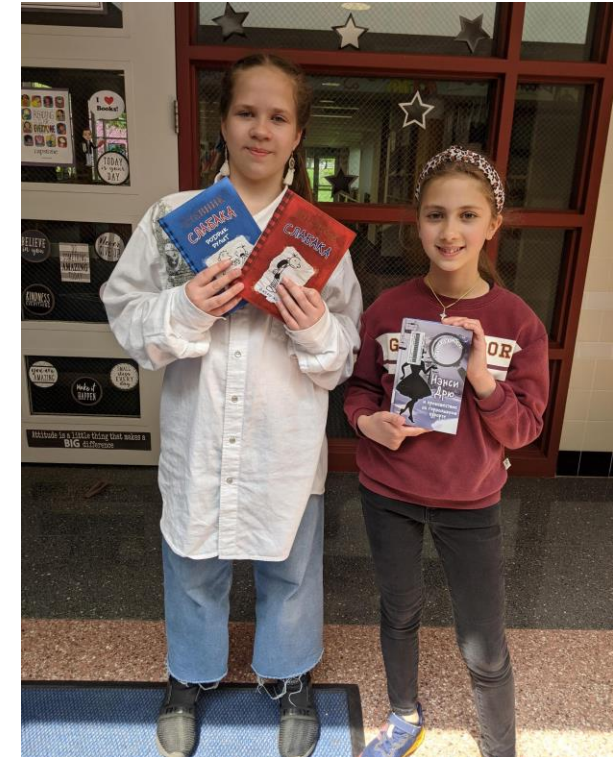
Forensic Science

Mobile Library



Multilingual Elementary Mobile Library
funding provided through the generosity of the
Great Valley School District Education Foundation

పుస్తకం		book		
libro		книга		
書		كتاب		
kitab		책		
पुस्तक	sách	本	livro	βιβλίο





Painting with Egg Tempura

2023 Funded Venture Grants - \$ 25,621

Grant	Recipient	School	Grant Amount
Art Goes to School	All Elementary School Art Tteachers		\$ 2,000
Calm Down Kits	Jackie Gualtieri	Sugartown Elementary	\$ 4,632
Child Study Team Intervention/Strategies	Mandy McClennen, Jim Simpkins, Lisa Phoenix, Ally Blickle	All Elementary Schools	\$ 3,300
Equitable Access to Library Books	Angela Michaels	High School	\$ 3,889
Forensic Science	Kimberly Wickham	GWES	\$ 2,255
Free Voluntary Reading Books	Erin Catalano	High School	\$ 1,286
Multilingual Elementary Mobile Library	Christina Ensling and Carrie Schildknecht	All Elementary Schools	\$ 4,500
Painting with Egg Tempura	Rebekah Groh	High School	\$ 640
STEM walking classroom - Walk. Listen. Learn.	Jade Hayes	K.D. Markley Elementary School	\$ 3,120

Want to Learn More about Venture Grants?

Go to gvsdef.org and click Programs & Projects

Click on Venture Grants; scroll to Guidelines and 2023-2024 Document

Still have questions email us at VentureGrant@gvsdef.org